



THE CLAYTON

Edgewater Crossing offers a suburban setting in an urban neighborhood. With 2-3 story townhomes and paired homes, along with rooftop decks or private yards, a pocket park in the heart of the community; this beautiful community provides great value in an unbeatable location.

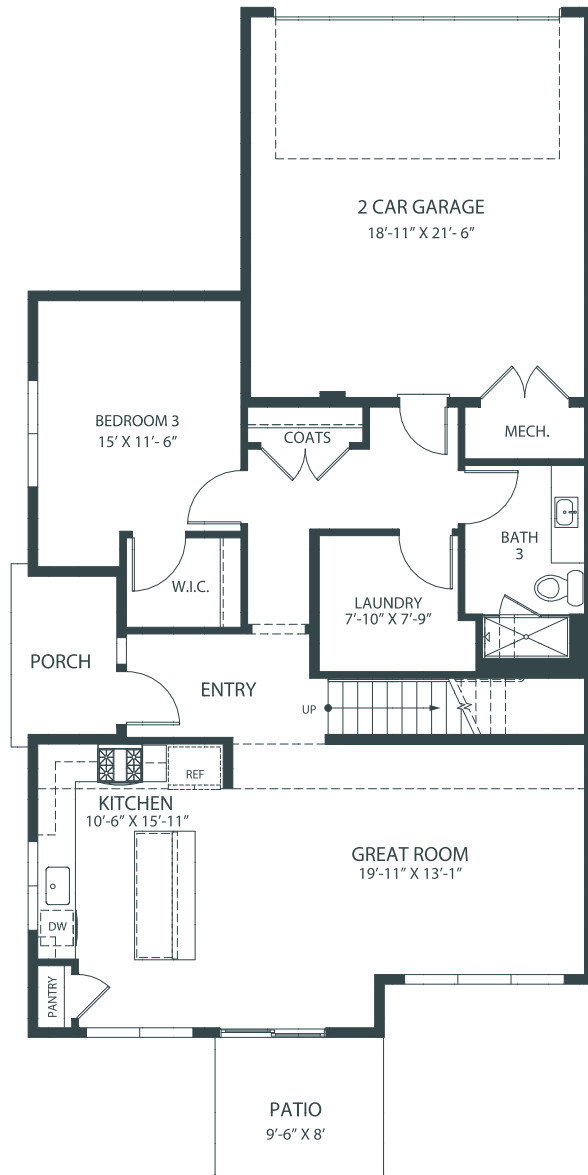
PLAN HIGHLIGHTS

- **1,837 Square Feet**
- **3 Bedrooms**
- **3 Baths**
- **2 Car Garage**
- **2 Stories**

THE CLAYTON

MAIN FLOOR

1,115 SF | 9' Ceilings



UPPER FLOOR

722 SF | 9' Ceilings

