

## THE GLENARM

**Edgewater Crossing offers a suburban setting in an urban neighborhood.** With 2-3 story townhomes and paired homes, along with rooftop decks or private yards, a pocket park in the heart of the community; this beautiful community provides great value in an unbeatable location.

### PLAN HIGHLIGHTS

- **1,806 to 2,512 Square Feet**
- **3 Bedrooms**
- **2.5 Baths**
- **2 Car Garage**
- **2 Stories**
- **Walk-Out Basement on select sites**

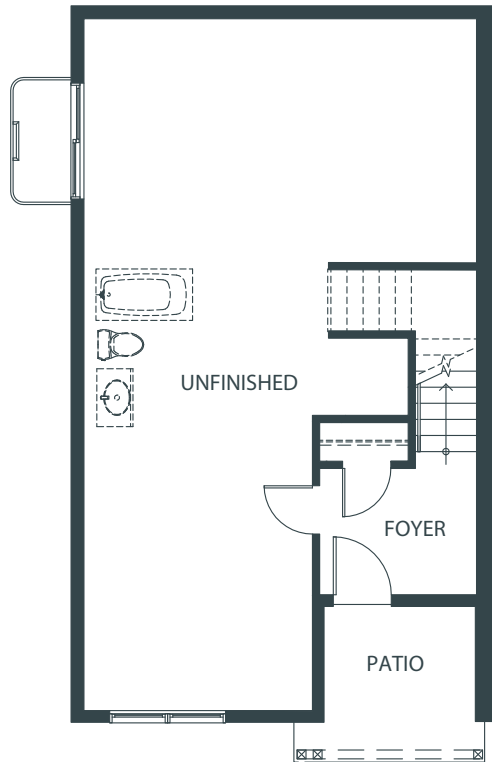


# THE GLENARM

## WALK-OUT BASEMENT

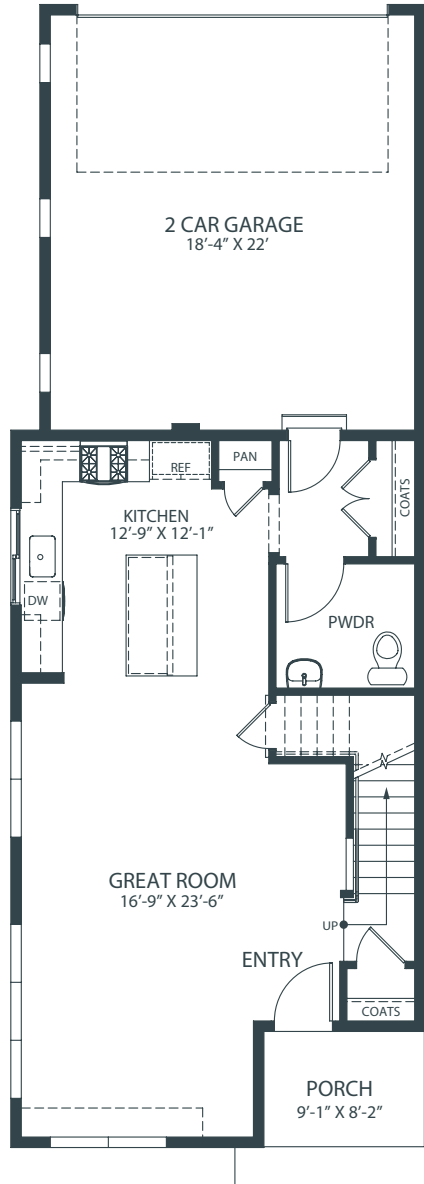
706 SF | 9' Ceilings

Available on Selected Sites



## MAIN FLOOR

739 SF | 9' Ceilings



## UPPER FLOOR

1,066 SF | 9' Ceilings

