

BLVD **55**  
**Hillside at  
 Castle Rock**

2203 Grayside Circle, Castle Rock, CO 80104

**720-926-1917 | BLVDbuilders.com**

BLVD **55**

**Hillside at Castle Rock**



*Alpine Exterior*



*Ridgeline Exterior*



*Summit Exterior*

PAIRED VILLAS COLLECTION

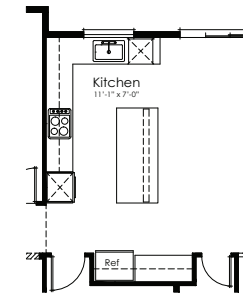
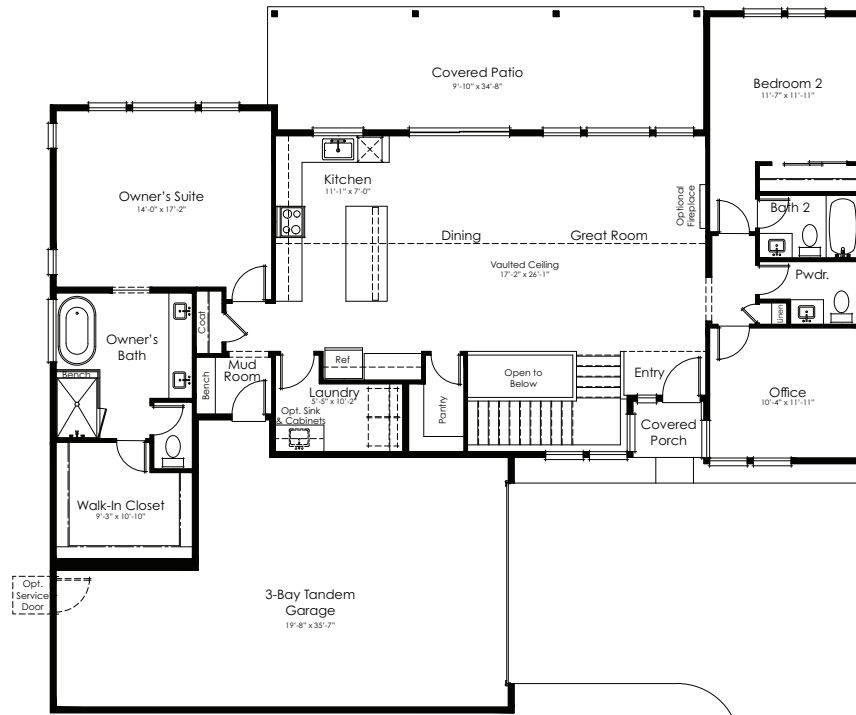
*The Ellingwood*

**Plan Highlights**

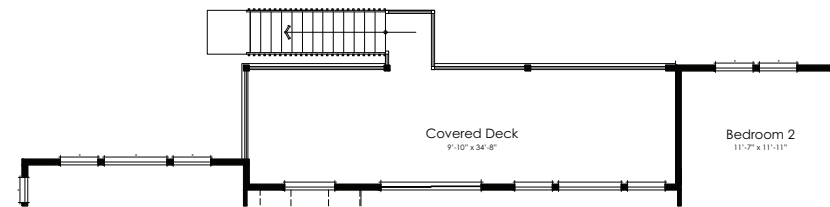
- 1,955 – 3,165 SQ. FT.
- 2 – 3 Bedrooms
- 2.5 – 3.5 Bathrooms
- Office
- Owner's Spa Bath and Stand-up Shower with Bench
- Mud Room with Bench from Garage
- Large Laundry Room
- Walk-in Pantry
- Full Unfinished Basement Lower Level
- Vaulted Ceilings at Great Room, Dining & Kitchen
- 16' Sliding Glass Door at Patio/Deck Available
- Oversized Rear Covered Patio
- Covered Front Porch
- 3-Bay Tandem Garage

## Main Level

1,955 SQUARE FEET  
10' CEILING HEIGHT



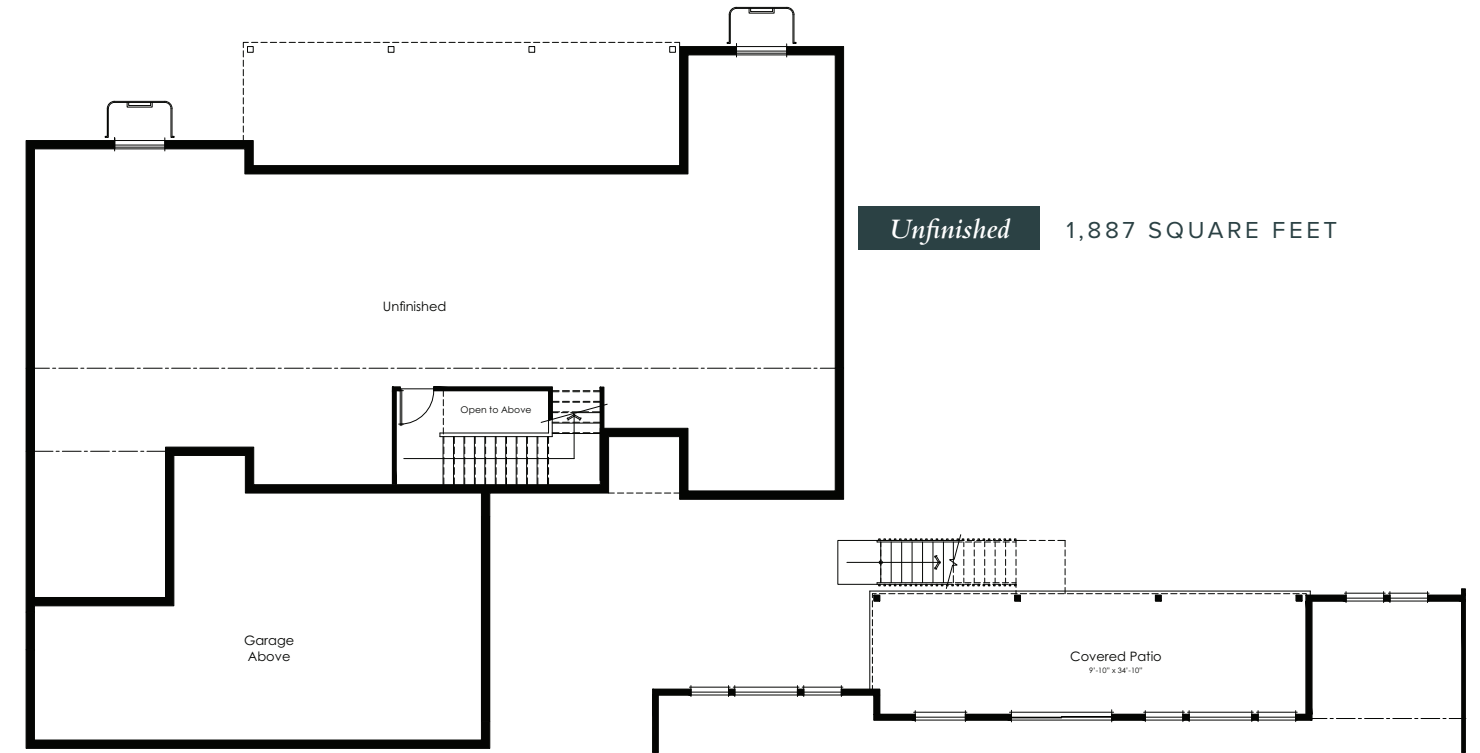
Optional Gourmet Kitchen



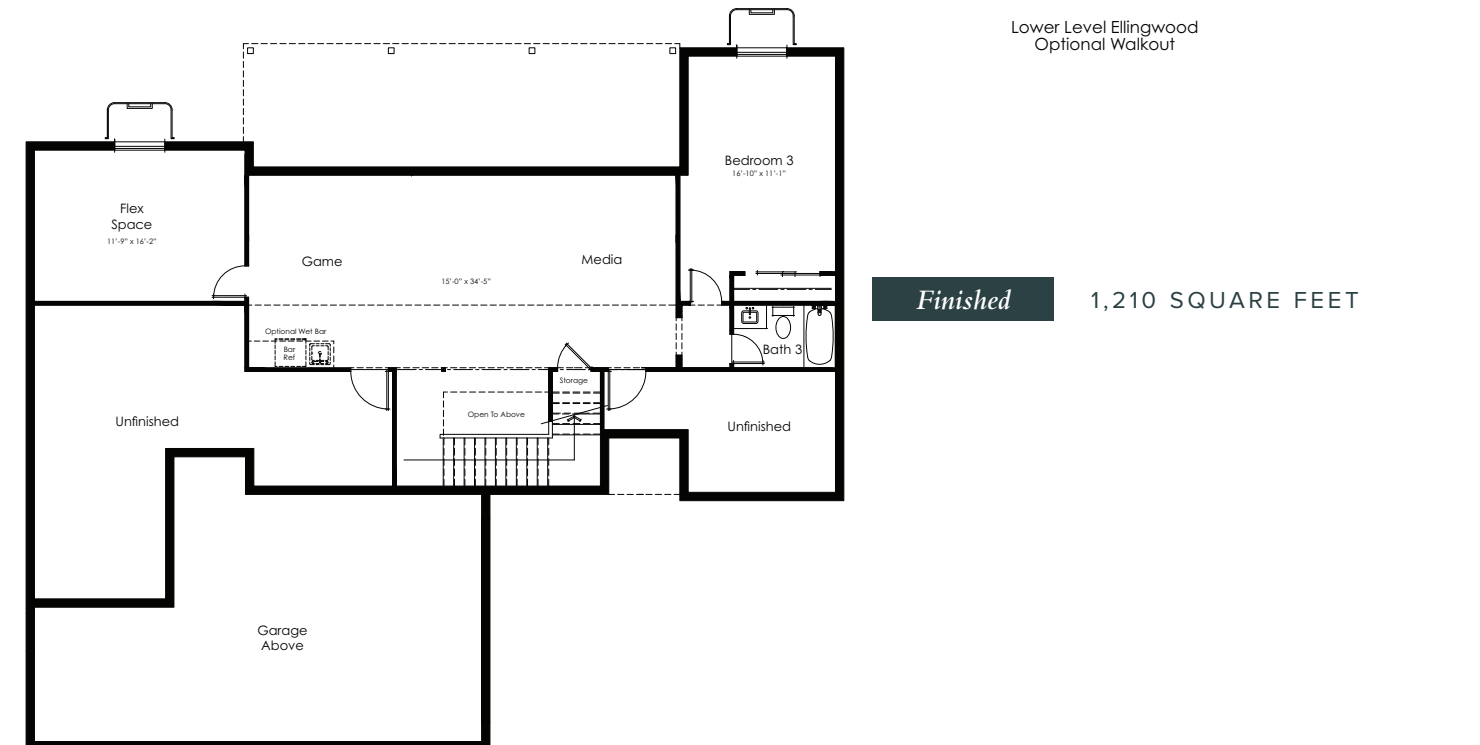
Main Level Ellingwood  
Optional Walkout

## Lower Level

8'8" CEILING HEIGHT



Unfinished 1,887 SQUARE FEET



Lower Level Ellingwood  
Optional Walkout

Finished 1,210 SQUARE FEET